

# PV-ezRack®

By Clenergy 

## ComT

Tilt mounting system for PV installation on tin roof's



# PV-ezRack ComT

The Clenergy PV-ezRack ComT is an universal and fast mounting system for PV installation on all residential or commercial flat tin roofs. With its flexible and scalable design it enables perfect utilization of roof surface available. With tilt angles of 5°, 10° or 15°, the PV panels can generate a maximum output. Both silver and black anodized components are available.



FL-COMT/Z/G & RL-COMT/Z/G

## Legs Assembly

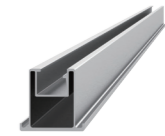
Highly pre-assembled Legs enable easy and fast installation. Manufactured from aluminum offer excellent corrosion resistance.



S-MT

## MT-Rail Support

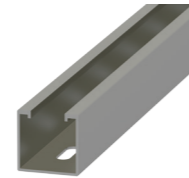
The MT-Rail Support (240 mm/440 mm) is special developed for tin roofs with large span purlins. Glued EPDM pad applied for water-resistance protection.



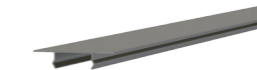
ER-R-T

## T-Rail

The Rail profile has been specially developed to achieve large spans to reduce the number of interfaces to be fixed. Both T-Rail 50 and T-Rail 110 available.



EZ-CT-40/40/2560



CO-MT/855

## Cable Tray

The Cable Tray is special developed for holding cables, which keep module interconnect cables neatly connected to the mounting rails so they do not drop below the array. Work with the Cover for MT-Rail as a new solution for cable management.

## Cover for MT-Rail

## Main Benefits

### Easy and quick installation

Highly pre-assembled legs enable easy and fast installation. With our patented Z-Module, the legs can easily click into the slot of Rails at any given points.

### Optimize energy output

The Legs can mount PV panels that width up to 1200 mm. And with 5° (available soon), 10° and 15° (available soon) tilt angles options, PV-ezRack ComT can offer optimized energy output.

### Two Optional Solutions

The solution using MT Rail in conjunction with T-Rails and Legs is specially developed for tin roofs with a large purlin span over 3 m. And the other one using our popular L-feet, ECO Rails and new Legs offers flexible height adjustable range.

### Universal

The adjustable clamps can mount framed PV panels that height from 30 to 46 mm. And with Clenergy various frameless clamps, PV-ezRack ComT can mount every size of frameless or thin film panels.



ER-I-05 ER-I-05/CM ER-I-05A/EZC/ECO ER-I-25 EZ-AD-C43

## Tin interface

The robust aluminium L-feet, which provides a height adjustment of almost 30mm, is designed for corrugated and trimdek type tin roofs. It comes with Z-Module, Click Module or ez Connection, which is pre-assembled and helps to ease the Rail installation.



10 Year  
Warranty\*

Commercial

Residential

International Patent  
PCT/AU2009/000616

\*see Clenergy PV-ezRack warranty for further details

**PV-ezRack®**  
By Clenergy