



*Black frame product can be provided upon request.

CS6K-270|275|280P

Canadian Solar's modules use the latest innovative cell technology, increasing module power output and system reliability, ensured by 16 years of experience in module manufacturing, well-engineered module design, stringent BOM quality testing, an automated manufacturing process and 100% EL testing.

KEY FEATURES



Excellent module efficiency of up to: 17.11 %



High PTC rating of up to: 92.14 %



IP68 junction box for long-term weather endurance



Heavy snow load up to 6000 Pa, wind load up to 4000 Pa *



linear power output warranty



product warranty on materials and workmanship

MANAGEMENT SYSTEM CERTIFICATES*

ISO 9001:2008 / Quality management system

ISO 14001:2004 / Standards for environmental management system

OHSAS 18001:2007 / International standards for occupational health & safety

PRODUCT CERTIFICATES*

IEC 61215 / IEC 61730: VDE / CE



* If you need specific product certificates, and if module installations are to deviate from our guidance specified in our installation manual, please contact your local Canadian Solar sales and technical representatives.

CANADIAN SOLAR INC. is committed to providing high quality solar products, solar system solutions and services to customers around the world. As a leading PV project developer and manufacturer of solar modules with over 25 GW deployed around the world since 2001, Canadian Solar Inc. is one of the most bankable solar companies worldwide.

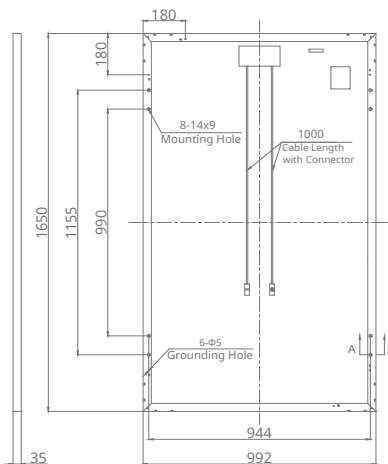
*For detailed information, please refer to the Installation Manual.

CANADIAN SOLAR INC.

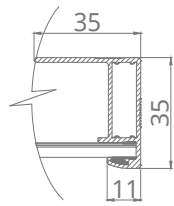
545 Speedvale Avenue West, Guelph, Ontario N1K 1E6, Canada, www.canadiansolar.com, support@canadiansolar.com

ENGINEERING DRAWING (mm)

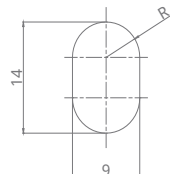
Rear View



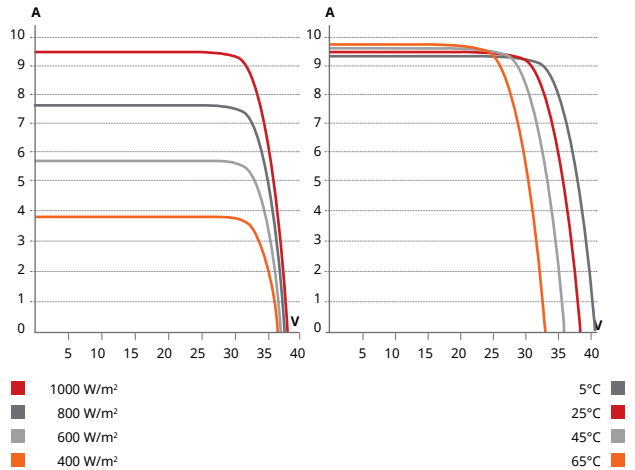
Frame Cross Section A-A



Mounting Hole



CS6K-280P / I-V CURVES



ELECTRICAL DATA | STC*

| CS6K | 270P | 275P | 280P |
|------------------------------|---|--------|--------|
| Nominal Max. Power (Pmax) | 270 W | 275 W | 280 W |
| Opt. Operating Voltage (Vmp) | 30.8 V | 31.0 V | 31.3 V |
| Opt. Operating Current (Imp) | 8.75 A | 8.88 A | 8.95 A |
| Open Circuit Voltage (Voc) | 37.9 V | 38.0 V | 38.2 V |
| Short Circuit Current (Isc) | 9.32 A | 9.45 A | 9.52 A |
| Module Efficiency | 16.50% | 16.80% | 17.11% |
| Operating Temperature | -40°C ~ +85°C | | |
| Max. System Voltage | 1000 V (IEC/UL) or 1500 V (IEC/UL) | | |
| Module Fire Performance | TYPE 1 (UL 1703) or CLASS C (IEC 61730) | | |
| Max. Series Fuse Rating | 15 A | | |
| Application Classification | Class A | | |
| Power Tolerance | 0 ~ + 5 W | | |

* Under Standard Test Conditions (STC) of irradiance of 1000 W/m², spectrum AM 1.5 and cell temperature of 25°C.

ELECTRICAL DATA | NMOT*

| CS6K | 270P | 275P | 280P |
|------------------------------|--------|--------|--------|
| Nominal Max. Power (Pmax) | 199 W | 202 W | 206 W |
| Opt. Operating Voltage (Vmp) | 28.3 V | 28.5 V | 28.8 V |
| Opt. Operating Current (Imp) | 7.01 A | 7.10 A | 7.16 A |
| Open Circuit Voltage (Voc) | 35.3 V | 35.4 V | 35.6 V |
| Short Circuit Current (Isc) | 7.52 A | 7.63 A | 7.68 A |

* Under Nominal Module Operating Temperature (NMOT), irradiance of 800 W/m², spectrum AM 1.5, ambient temperature 20°C, wind speed 1 m/s.

PERFORMANCE AT LOW IRRADIANCE

Outstanding performance at low irradiance, with an average relative efficiency of 96.5 % for irradiances between 200 W/m² and 1000 W/m² (AM 1.5, 25°C).

* The specifications and key features contained in this datasheet may deviate slightly from our actual products due to the on-going innovation and product enhancement. Canadian Solar Inc. reserves the right to make necessary adjustment to the information described herein at any time without further notice.

MECHANICAL DATA

| Specification | Data |
|------------------------|--|
| Cell Type | Poly-crystalline, 6 inch |
| Cell Arrangement | 60 (6 × 10) |
| Dimensions | 1650 × 992 × 35 mm (65.0 × 39.1 × 1.38 in) |
| Weight | 18.2 kg (40.1 lbs) |
| Front Cover | 3.2 mm tempered glass |
| Frame Material | Anodized aluminium alloy |
| J-Box | IP68, 3 bypass diodes |
| Cable | 4.0 mm ² (IEC), 12 AWG (UL), 1000 mm (39.4 in) |
| Connector | T4 series |
| Per Pallet | 30 pieces |
| Per Container (40' HQ) | 840 pieces |

TEMPERATURE CHARACTERISTICS

| Specification | Data |
|---|--------------|
| Temperature Coefficient (Pmax) | -0.40 % / °C |
| Temperature Coefficient (Voc) | -0.31 % / °C |
| Temperature Coefficient (Isc) | 0.05 % / °C |
| Nominal Module Operating Temperature (NMOT) | 43 ± 3 °C |

PARTNER SECTION



CANADIAN SOLAR INC.

545 Speedvale Avenue West, Guelph, Ontario N1K 1E6, Canada, www.canadiansolar.com, support@canadiansolar.com